

Century Song

Tour Rider 2016

All Presenters must supply complete technical information for their venue. The information provided must include a floor plan, section, complete theatre plan including seating configurations. All plans must be in CAD format. A full technical equipment inventory must also be provided.

The Project

Century Song is a new Canadian electro/acoustic danceopera imagining a different way to negotiate history. Through a black female protagonist – acting as a kind of “everyman” – we feel our way through the past one hundred years, using classical song, dance and visual art. It is a wordless piece, using pure feeling – as elicited by non-textual forms – as its performance language.

The Set

***Please see attached set drawing**

The set consists of 3 Black Velour portals in forced perspective, a 18'-0" x 11'3" (5.5m x 3.43m) white projection surface (framed by the most US portal, and a white fabric floor, which acts a dance and projection surface. The wings of the stage are left open, exposing our musicians on stage right, and our performer and stage manager on stage left. The three sets of legs and borders are hung on lengths of aluminum ladder truss and rigged to the grid above. The projection screen is also hung from the US ladder truss which, must be pipe weighted at the bottom and stretched on both sides. The fabric floor cloth is laid in three sections, and seamed with fabric tape. The floor is taped to the stage floor on all sides with 2" black fabric gaffers tape.

***Please see attached set drawing**

Minimum stage dimensions: 38'- 0" (11.6m) Wide x 25'- 0" (7.6m) Deep

Minimum grid height: The grid height must allow for our main video projector to be hung at 13' (4m - distance to lens). This means there needs to be clearance for the body of the projector (2' or 0.61m). A grid of at least 16' (4.88m) is preferable. Our second projector (for floor projections) requires a hanging position of 21' 0" (6.40m - distance to lens). If a 21' hanging position is not possible, please contact Volcano Theatre - an alternate solution is possible.

The Presenter must provide:

- Clean, smooth dance surface with a sprung floor, and a clean coat of black paint. If your stage floor is not sprung, please contact us - some non-sprung floors may be acceptable.
- All add pipe and rigging cables necessary to dead hang 6 points at a minimum distance of 12' above the stage. All rigging cables must have the ability to make fine adjustments in height.
- one 20' (6m) long steel pipe to weight the bottom of the projection screen
- 6, 2' (60cm) long steel pipes to weight the bottom of legs
- An A-frame ladder or extension ladder able to access the lighting pipes and rigging.
- 100' (30m) roll of clean heavy paper, or equivalent, to protect white floor during tech work.
- 1 roll of 2" black fabric gaffers tape, 1 roll 2" white fabric gaffers tape.
- Nine good condition steel safety cables able to reach 12' above stage height and connect to the overhead rigging.

Volcano Theatre will provide:

- Three Black Velour (FR) Borders - (2'x22')(2'x26')(2'x29'), (0.6m x 6.7m)(0.6m x 7.9m)(0.6m x 8.8m)
- Three Sets of Black Velour (FR) Legs - (2'x12') (2'x13') (2'x14'), (0.6m x 3.7m)(0.6m x 4m)(0.6m x 4.3m)
- Three lengths of 2" aluminum ladder truss - (22') (26') (29'), (6.7m) (7.9m) (8.8m)
- Three rolls of rubber backed canvas floor cloth - (81" wide, varying lengths), (2m wide)

Initialled

For Volcano:
For Presenter:

Date (d/m/y)

Century Song

Tour Rider 2016

The Projection

The performance incorporates the use of two digital projectors, focused on the floor and US screen. The projectors must be rigged to the grid with additional piping at a height of 13' and 21' (4m and 6.4m)

****please not our SM operates video during the performance and tech period.

The Presenter must provide:

- 12 additional lengths of 2"OD schedule 40 pipe of various lengths and, 16 cheeseburgers (minimum 4 swivel).
- Two dedicated 120v, 15amp circuits (transformer if required) and ample U-ground cable to reach the stage grid.
- one 24" x 24" table for onstage SM position and video control
- AC power 120 v, 15amps @ SL SM position, transformer if required
- 4, adapters to north american Edison style, U-ground plugs

Volcano Theatre will provide:

- One Panasonic DZ870 (WUXGA1920x1200) with mount and 0.8-1.0:1 zoom lens
- One Panasonic DX100 (XGA1024x768) with mount and 0.8-1.0:1 zoom lens
- One MacBook Pro Retina, Running Isadora 2.1
- One Gefen DVI ELR Extender (sender unit and receiver unit)
- One Gefen VGA LR Extender (sender unit and receiver unit)
- One NetGear GS105 Ethernet Switch
- all necessary adapters and Cat 5e cable

The Lighting

*Please see attached sample lighting plot

The Presenter must provide:

- a minimum of 72, 2.4kw dimmers in good working condition
- a fully functional professional quality lighting console, capable of theatrical cueing
- 8, 50degree 575w Source Four ellipsoidal
- 32, 36degree 575w Source Four ellipsoidal
- 22, 26degree 575w Source Four ellipsoidal
- 10, 19degree 575w Source Four ellipsoidal
- 15, 6" Fresnels 500w with barn doors
- 6, 2m tall dance lighting booms, capable of supporting at least 4 lamps each
- 4, Rosco I-Cue moving mirrors for Source Four ellipsoidal
- 2, DMX Irises
- 4, colour scrollers with Source Four ellipsoidal mounting bracket; OW, R312, R15, R22, R26, R27, R339, R39, R358, R79, R382, R3202, R76, R95, R94, R90 (ETC LED Leko substitute possible)

Volcano Theatre will provide:

- all necessary gel and gobo's

Initialled

Date (d/m/y)

For Volcano:

For Presenter:

Century Song

Tour Rider 2016

The Sound

***Please see attached stage plot**

The Presenter must provide:

- One grand piano between 5'6" and 7' in length with the ability to pluck, strum, and prepare the interior strings. The piano must be professionally tuned (A440) after it has been positioned on set, and prior to each performance. Piano size could be substituted for a larger version, depending on the venue. Please contact Volcano Theatre to discuss this option.
- Two powered speakers (wattage appropriate to venue) on extendable stands
- Two 1/4" balanced output cables from speakers to percussion position (PP)
- AC power 120 v, 15amps @ PP, transformer if required
- One SM 57 on boom stand plus XLR to PP
- One straight (bell base) microphone stand in good condition, and XLR to PP
- Two Crown PCC 160 or comparable plus XLR to PP
- Two Rode M5 or comparable condenser mic with one short desktop stand, and one tall boom stand and XLR
- One Black 22" bass drum, Yamaha or other pro model (DW, Sonor, etc)
- One low table or bass drum stand 45cm - 55cm tall, to accommodate the bass drum placed on its side.
- One Table, min measurements 71cm h x 76cm w x 49cm d for laptop and other electronics
- One 2 octave concert glockenspiel and x frame stand
- Clear Com communication system with 4 belt packs and 4 headsets
- Additional vocal amplification may be necessary depending on the size and acoustics of the venue. Please contact Volcano Theatre to discuss acoustics.

Volcano Theatre will provide:

- Firewire sound card w 8x XLR inputs/phantom power, laptop, midi mixer
- Power bar for North American electronics
- Misc percussion, mallets

The Company

****** Please note - one performer starts the show in the house, seated in the 1st row of the house at centre.**

The company consists of 7 people:

- Three Performers; one singer/dancer, and two musicians
- One Director
- One Production Manager
- One Stage Manager (our SM will operate video from SL)
- One Video / Lighting Designer

The Presenter must provide:

- Daily transportation to and from the theatre
- Two clean dressing rooms with direct access to private washrooms and showers
- Access to laundry in the theatre, or a service to send it out nightly
- A comfortable bed for an adult and rest area for a 2 year old child
- One office with workspace for 5 people and access to the internet and printing
- Access to a kitchen area and greenroom
- Coffee, tea, water, and light snacks for 8 people

Initialled

Date (d/m/y)

For Volcano:

For Presenter:

Century Song

Tour Rider 2016

The Schedule

A 2-day tech schedule is possible with a lighting and rigging pre-hang. This option must be discussed with the Volcano production manager upon booking the show to ensure a correct pre-hang is achievable for the specific space. A 3-day schedule is preferable in situations where there is more time before opening.

2 Day Schedule - lighting and rigging pre-hang essential

Day One

- 08:00 - 12:00 • Projector Hang / Sound Install • 5 Crew
- 13:00 - 17:00 • Set Install / SM set up SL • 5 Crew
- 18:00 - 23:00 • Lighting Focus / Projector Focus • 5 Crew

Day Two

- 08:00 - 12:00 • LX / Video Levels / Tech Notes • 4 Crew
- 13:00 - 17:00 • Sound Levels / Q2Q work through • 2 Crew
- 19:00 - 19:40 • Pre Show • 1 Crew
- 20:00 - 21:00 • Performance #1 • 1 Crew

3 Day Schedule

Day One

- 08:00 - 12:00 • Lighting Hang • 4 Crew
- 13:00 - 17:00 • Projector Hang • 4 Crew
- 18:00 - 22:00 • Sound Install and Set Rigging • 4 Crew

Day Two

- 08:00 - 12:00 • Set Install • 4 Crew
- 13:00 - 17:00 • Lighting Focus and SL Video and SM setup • 4 Crew
- 18:00 - 22:00 • Projector Focus and Lighting board notes • 4 Crew

Day Three

- 08:00 - 12:00 • Lighting, Projection, and Sound Levels • 2 Crew
- 13:00 - 18:00 • Technical Work Through • 2 Crew
- 19:00 - 19:40 • Pre Show • 1 Crew
- 20:00 - 21:00 • Performance #1 • 1 Crew

Contact Information

Volcano Theatre

251 Crawford Street
Toronto, ON M6J 2V7
CANADA

Telephone: 416-538-4436 Fax: 416-538-5619

Director

- Ross Manson
- ross@volcano.ca

Choreographer

- Kate Alton
- kate@crookedfiguredances.ca

General Manager

- Meredith Potter
- meredith@volcano.ca

Production Manager

- Patrick Lavender
- lavenderlighting@gmail.com

Initialled

For Volcano:
For Presenter:

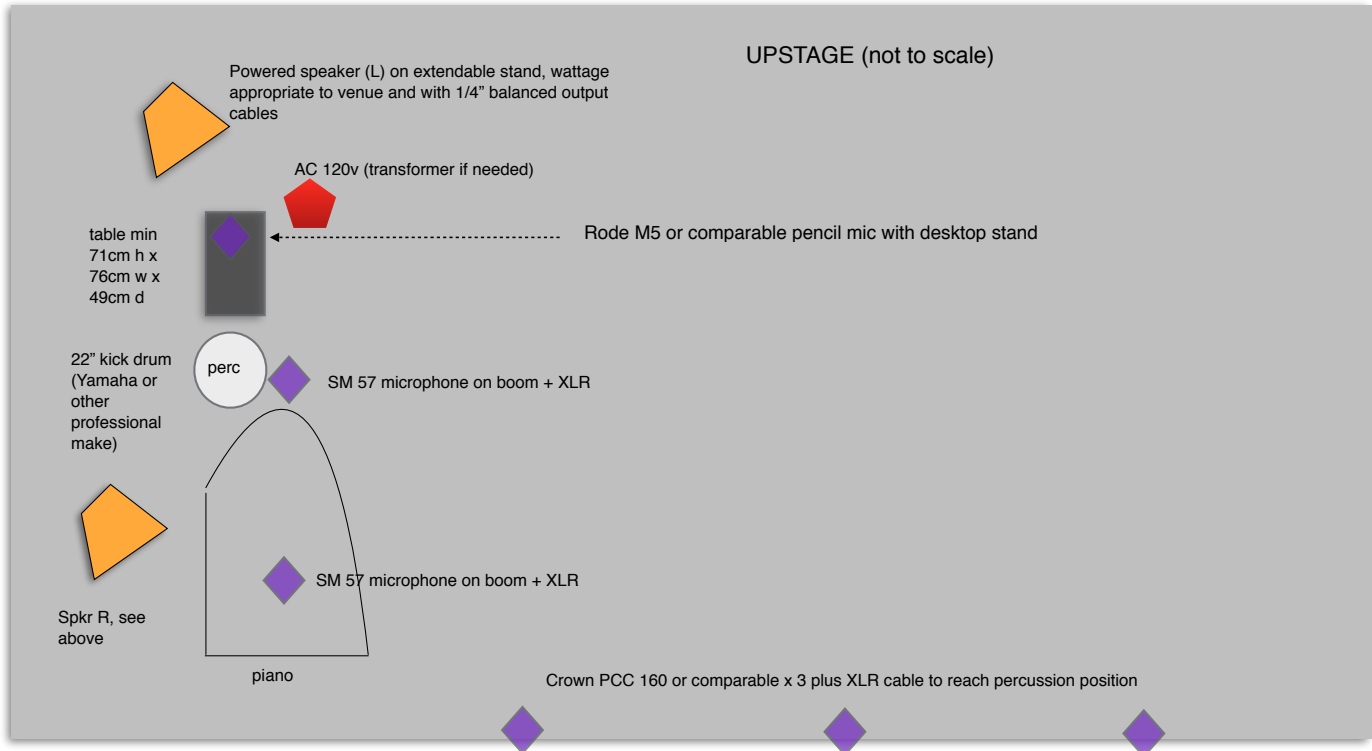
Date (d/m/y)

Century Song Tour Rider 2016

A Moveable Beast, music/audio backline

contact: Patrick Lavender (insert info)

Subject to confirmation



Supplied by performer:

Firewire sound card, 8x inputs, laptop, midi mixer, 2x 1/4" balanced cable for DI's to FOH
Power bar for North American electronics
Misc percussion, mallets

Supplied by venue:

2x Powered speakers (wattage appropriate to venue) on extendable stands
2x 1/4" balanced output cables from speakers to percussion position (PP)
AC power 120 v @ PP, transformer if required

Supplied by venue (continued):

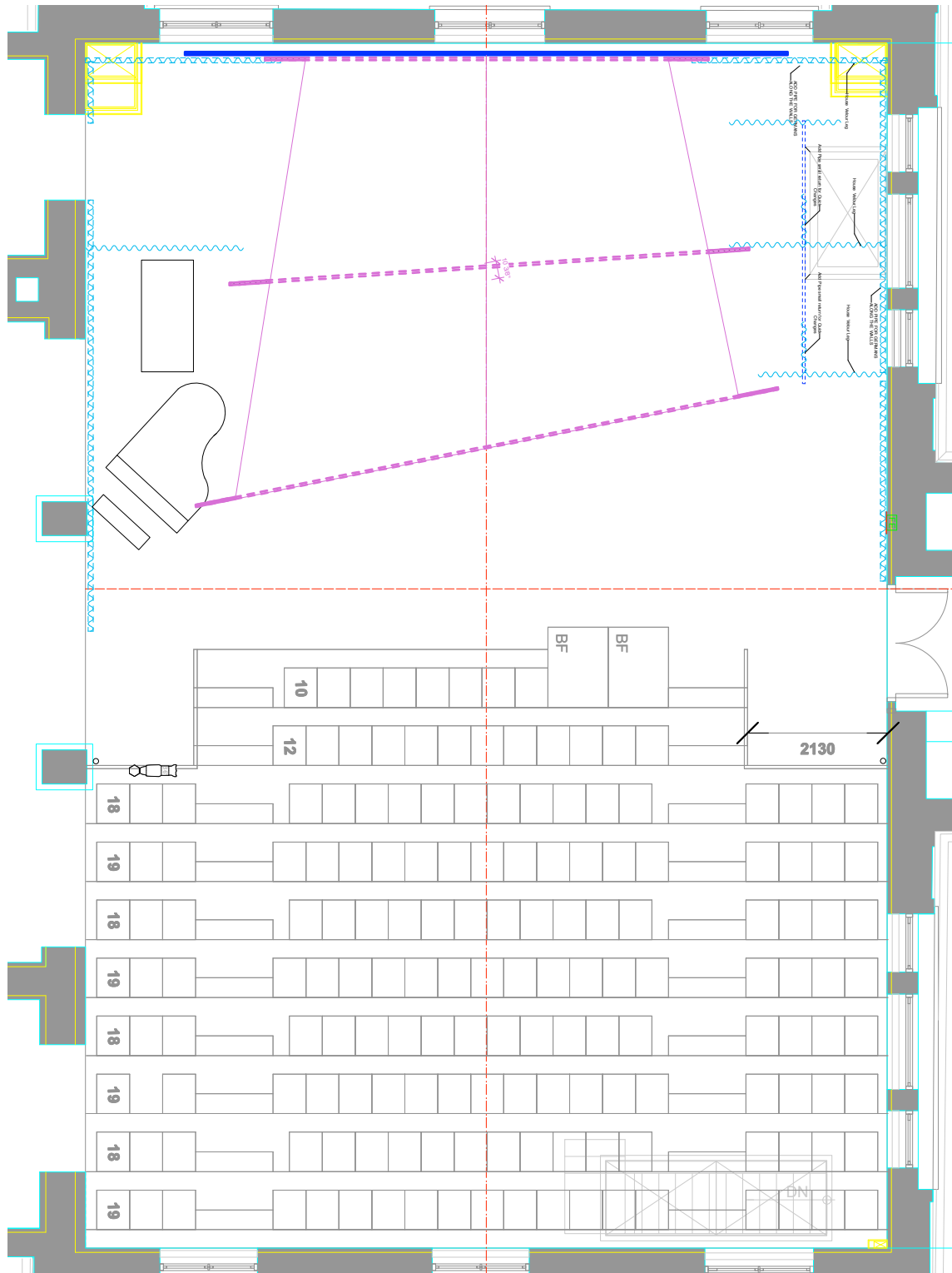
2x SM 57 on boom stands plus XLR to PP
3x Crown PCC 160 or comparable plus XLR to PP
22" kick drum, Yamaha or other pro model (DW, Sonor, etc)
Table, min measurements 71cm h x 76cm w x 49cm d for laptop and other electronics
Rode M5 or comparable condenser mic with desktop stand and XLR @ PP

Initialled

For Volcano:
For Presenter:

Date (d/m/y)

Century Song
Tour Rider 2016



Initialed

For Volcano:

For Presenter:

Date (d/m/y)